

**ACSmith**<sup>®</sup>  
Innovation has a name.

Water Purifier  
**A6**



**RO WITH MINERALISED & PURIFIED HOT WATER**



**100%RO**  
Zero Compromise

**PURE&SURE™**  
SUPERIOR TECHNOLOGY FOR ADVANCED PROTECTION.



**USER GUIDE**





## Contents

Key Features of your A. O. Smith <b>A6</b> water purifier .....	01
Pre-instruction literature .....	02
General instructions .....	03
Introduction .....	04
Product overview .....	06
Function of indicators .....	07
Water flow .....	10
Electrical diagram.....	11
Safety precautions.....	12
How to use.....	15
Draining drip tray.....	19
How to maintain your product.....	20
Troubleshooting.....	21
Technical specifications .....	24
FAQs.....	26

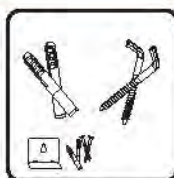
## What's in the box?



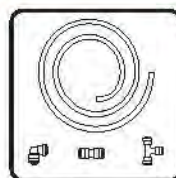
Water Purifier



User Guide



Mounting Accessories



Tube & Connectors

## Key Features of your A. O. Smith A6 water purifier



### PURITY THROUGH 7-STAGE PURIFICATION

**7S TECHNOLOGY:** Pre-filter + Sediment filter + Pre Carbon filter + RO Membrane + MIN-TECH (Mineraliser Technology) + Silver Activated Post Carbon + SCMT (Silver-Charged Membrane Technology). In A. O. Smith A6 water purifier, 100% of the water passes through the RO membrane and Double-Purified by SCMT.



### ADVANCE UNIQUE PATENTED SSM TECHNOLOGY (SIDE STREAM RO MEMBRANE)

Suitable for water with low and high (up to 2000 ppm) TDS. Wastes less water and improves pure water recovery.



### RO + SCMT (SILVER CHARGED MEMBRANE TECHNOLOGY)

SCMT is an additional stage of purification to prevent any potential secondary microbial contamination post RO purification. Double protection ensures safe drinking and healthy water.



### MIN-TECH (MINERALISER TECHNOLOGY)

The MIN-TECH (Mineraliser Technology) adds essential minerals to the water. This ensures that the water tastes fresh and natural and has balanced pH – an essential requirement for drinking water.



### HOT WATER AT A PRESS OF BUTTON

Only RO in India that gives you safe drinking hot water with added minerals at two temperature choices.



### TWIN ADVANCE ALERT TECHNOLOGY

For Sediment + Pre Carbon filter and RO membrane + other filters change.



### INDIA'S FIRST RO WITH NIGHT ASSIST

Glow effect guides you to your water purifier at night and makes your kitchen look good.



### CONVENIENCE

Safe drinking water storage capacity of 10 litres. Provision for both wall mounting & table top.



### DIGITAL

Digital display for simple and intelligent display of information.



### WQA CERTIFIED RO MEMBRANE

RO Membrane element in A. O. Smith A6 water purifier is tested and certified by WQA against NSF/ANSI 58 standards for material requirements.

## Pre-instruction Literature

### On Receipt

It is our policy to promote safe delivery of all orders. This product shipment has been thoroughly checked, packed and quality- certified before leaving our plant.

### Visible Loss or Damage

If any of the goods called for on the bill of lading or express receipt are damaged or the quantity is short, do not accept them until the freight or express delivery agent makes an appropriate notation on your freight bill or receipt.

### Concealed Loss or Damage

When a shipment has been delivered to you in apparent good condition, but upon opening the crate or container, loss or damage has taken place while in transit, inform the carrier's agent / A. O. Smith authorised distributor immediately.

### About this Manual

This manual is a guide to good practice for operating and periodic maintenance of the A. O. Smith **A6** water purifier.

Do not operate before reading manual supplied with this product.

Please follow instructions in this manual to ensure personal safety and proper operation of this product. A. O. Smith assumes no liability for installation or servicing performed by any unauthorised personnel. Always install, operate, inspect and maintain this product in accordance with all applicable standards. Please store this user manual carefully for any future reference.

## General Instructions

### Safety

Your safety and the safety of your loved ones is paramount to us. There are several safety related messages in this manual, which have been provided during various stages such as installation, operation and maintenance of your A. O. Smith **A6** water purifier. These messages point out potential hazards and also educate on how to reduce any potential risks. Please always read and follow all safety messages as provided in this manual



This is the safety alert symbol. This symbol alerts you to potential hazards that can hurt you and others. All safety messages will follow the safety alert symbol and either the word "DANGER" or "WARNING".



Indicates an imminently hazardous situation which, if not avoided, will result in death or serious injury.



Indicates a potentially hazardous situation which, if not avoided, could result in death or serious injury.



Indicates a potentially hazardous situation which, if not avoided, may result in minor or moderate injury or property damage.

### IMPORTANT

These instructions have been written as a guide for the proper installation and operation of your A. O. Smith **A6** water purifier. A. O. Smith will not accept any liability where these instructions have not been followed. However, for your safety and to avoid damage caused by improper installation, it is recommended that water purifier must be installed by A. O. Smith authorised distributor only.

Before proceeding with the installation instructions:

1. Inspect the A. O. Smith **A6** water purifier and its component parts for possible damage. **DO NOT** install or attempt to repair any damaged component parts. If you detect any damage in your A. O. Smith **A6** water purifier please contact A. O. Smith authorised distributor.
2. Verify that the voltage being supplied corresponds to that which is mentioned in the A. O. Smith **A6** water purifier manual.

## Introduction

A. O. Smith **A6** water purifier uses one of the latest technologies that is used in water purification process. A. O. Smith **A6** water purifier works under the principle of RO (Reverse Osmosis) technology which is found to be one of the most effective process. In this process water under pressure is passed through a semi-permeable membrane. Purified water is collected for drinking in a storage tank and impurities in the water are flushed to the drain.

### Why water purification is important?

Water purification today is essential due to the presence of harmful contaminants present in the water supply. Rapid urbanization and speedy industrial growth has led to significant pollutants being found in the water supply. Below is a list of some of the harmful contaminants found today in the water supply, which if consumed in excess, can be detrimental to human health.

- TDS (Total Dissolved Solids) like nitrates, chlorides, sulfates, etc.
- Heavy metals like Arsenic, Lead, Chromium, Cadmium etc., imbalanced pH.
- Microorganisms such as pathogenic bacteria

A. O. Smith **A6** water purifier removes excessive TDS (Total Dissolved Solids) in water by more than 95%. A. O. Smith **A6** water purifier reduces heavy metals, removes pathogens and balances the pH value. By this, it ensures you safe and great tasting water.

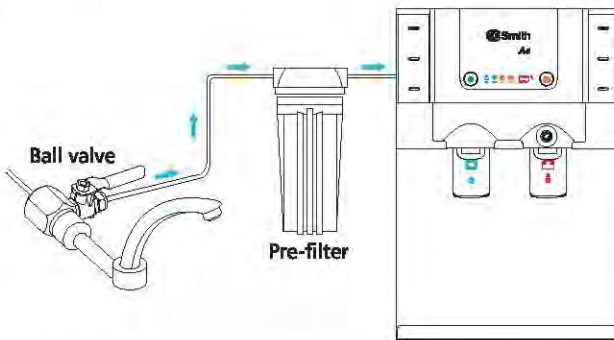
### How does A. O. Smith **A6** water purifier work?

A. O. Smith **A6** safe drinking water has 7 stages of purification system, wherein the water is passed through the various stages and progressively filtered to get purified water which is stored in the inbuilt storage tank.

- **Stage 1 – Pre-filter**  
The Pre-filter is used to remove physical contaminants such as dirt, dust, soil particles, turbidity present in the water. This improves the life of the Sediment filter.
- **Stage 2 – Sediment filter**  
The Sediment filter is used to remove fine and coarse physical contaminants present in the water. This improves life of the Pre Carbon filter and ensures efficient working of RO membrane.

- **Stage 3 – Pre Carbon filter**  
The Pre Carbon filter uses carbon block with high adsorbption capacity which reduces harmful chemicals including residual chlorine etc., from water. It also adsorbs bad taste and odour causing from water.
- **Stage 4 – RO (Reverse Osmosis) membrane**  
RO membrane contains semi-permeable membrane wherein the water is passed through the semi-permeable membrane to remove TDS (Total Dissolved Solids) and heavy metals like arsenic, lead, chromium, cadmium etc. It also removes microorganisms like bacteria.
- **Stage 5 – MIN-TECH (Mineraliser Technology)**  
The MIN-TECH contains calcium and magnesium minerals which helps to improve the taste and quality of water. It adds the required essential minerals back to water and balances the pH of water.
- **Stage 6 – Silver Activated Post Carbon**  
Water is passed through Silver Activated Post Carbon which acts as polisher and enhances the taste of water.
- **Stage 7 – SCMT filter (Silver Charged Membrane Technology)**  
In the final stage water is passed through SCMT filter which ensures double purification of water making it Safe & Sure for drinking.

**Figure 1**



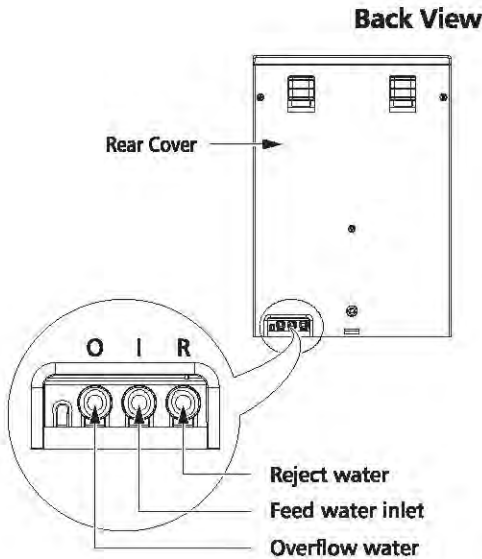
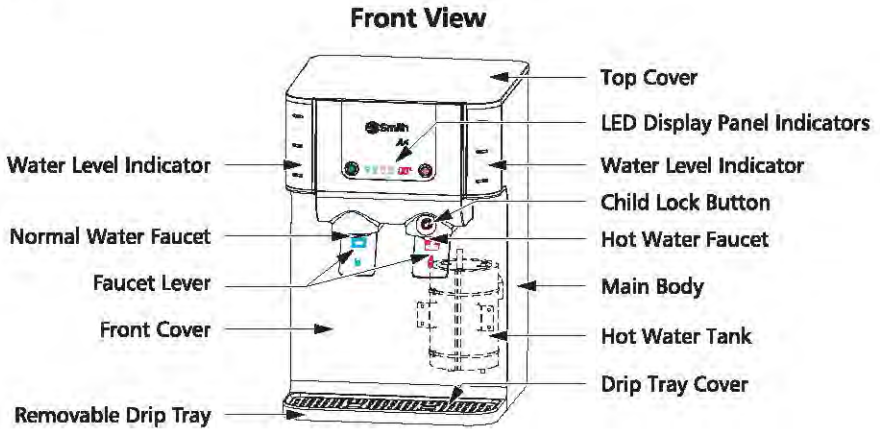
**Note:** The Pre-filter and the Ball valve comes along with the product as standard accessories.



## Product Overview

### A. O. Smith A6 water purifier

Figure 2



## Function of indicators

### Power Button

This button is used to switch ON/OFF the water purifier.

- When there is a leak in the water purifier, the power button starts to blink with continuous beep till it is fixed.
- When the water pressure is lower than required water pressure limits, the power button starts to blink continuously with the beep sound for 10 seconds till the water pressure becomes normal.

Note: Call A. O. Smith authorized distributor if you notice continuous blinking of Power light.

### Tank full indicator

This indicates that the water purifier tank is full.

- When there is an overflow the indicator starts to blink with continuous beep till it is fixed.

Note: Call A. O. Smith authorized distributor if you notice continuous blinking of Tank full indicator.

### Auto flush indicator

This indicates flushing is in progress. Every time the water purification process is activated the auto flushing mechanism cleans the RO membrane. It enhances the life of RO membrane.

Note: Call A. O. Smith authorized distributor if you notice continuous blinking of Auto flush indicator.

## RO change indicator

This indicates that the MIN-TECH, Silver Activated Post Carbon, SCMT filter and/or RO membrane needs to be replaced.

- RO change indicator glows when 10% life is remaining, indicating that it is time to replace MIN-TECH, Silver Activated Post Carbon, SCMT filter and/or RO membrane.
- When MIN-TECH, Silver Activated Post Carbon, SCMT filter and/or RO membrane life reaches its end, this indicator will start to blink continuously. The unit will not function until MIN-TECH, Silver Activated Post Carbon, SCMT filter and/or RO membrane are/is replaced.
- RO change indicator keeps blinking continuously with the buzzer beeping for 10 times every time the system is switched ON. The unit will not function until MIN-TECH, Silver Activated Post Carbon, SCMT filter and/or RO membrane are/is replaced.

Note: Call A. O. Smith authorized distributor to replace the MIN-TECH, Silver Activated Post Carbon, SCMT filter and/or RO membrane.

## SCPA change indicator

This indicates that the Sediment filter and/or Pre Carbon filter needs to be replaced.

- SCPA change indicator glows when 10% life is remaining, indicating that it is time to replace Sediment filter and/or Pre Carbon filter.
- When Sediment filter and/or Pre Carbon filter life reaches its end, this indicator will start to blink continuously and the unit will not function until Sediment filter and/or Pre Carbon filter are/is replaced.
- SCPA change indicator keeps blinking continuously with the buzzer beeping for 10 times every time the system is switched ON. The unit will not function until Sediment filter and/or Pre Carbon filter are/is replaced.

Note: Call A. O. Smith authorized distributor to replace the Sediment filter and/or Pre Carbon filter.

## Temperature indicator

This indicates the temperature of water inside the hot water tank and displays the Error codes in case of fault in the water purifier.

Note: Call A. O. Smith authorized distributor if you notice any Error messages (Refer page 23).

## Water Heating Button

This purifier is capable of dispensing warm water (45°C) and hot water (80°C) desired. This button is used to heat the water inside the hot water tank of the purifier.

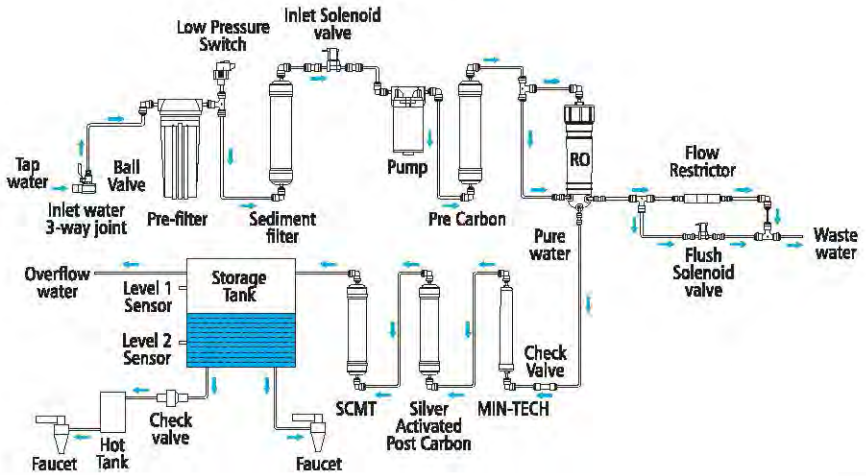
## Child Lock Button

As a safety feature while dispensing hot water, the purifier has a built-in Child lock feature. This button prevents accidental dispense of hot water.

---

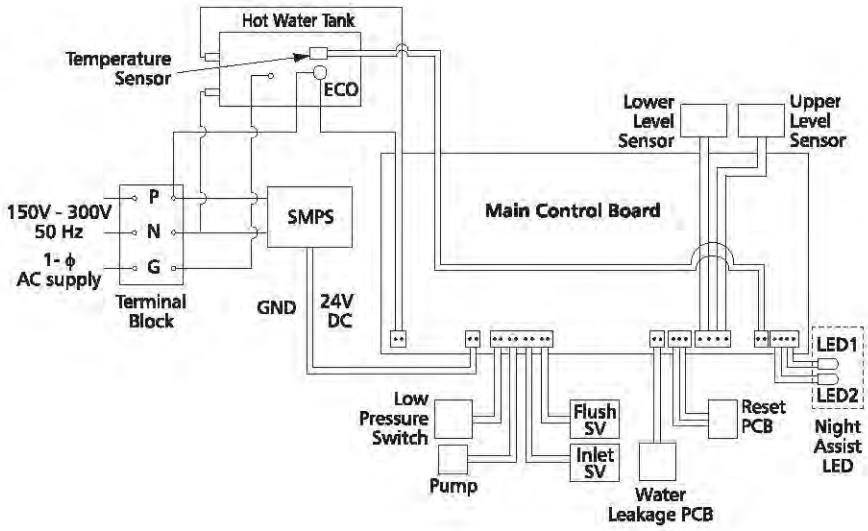
# Water flow

Figure 3



# Electrical diagram

Figure 4



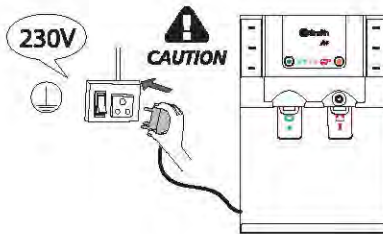
# Safety Precautions

## Electrical safety

Even though the product is designed keeping highest safety standards in mind, there are certain Dos and Don'ts which need to be followed while using this product.

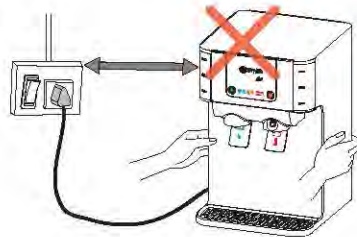
Power plug must be used with a grounded 230V outlet. (Figure 5)

Figure 5



Do not move the product when product is running. (Figure 6)

Figure 6



Do not pull out or touch power plug with wet hands to avoid electrical shock. (Figure 7)

Figure 7



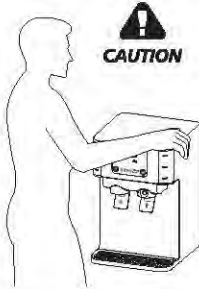
Install the product away from direct sunlight. (Figure 8)

Figure 8



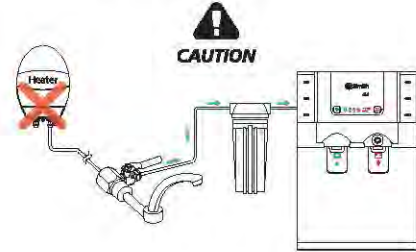
Product should be installed only by A. O. Smith authorized distributor. (Figure 9)

Figure 9



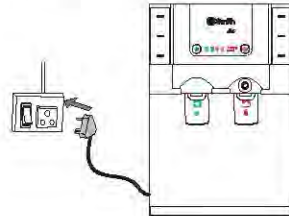
Do not connect hot water to the product. (Figure 10)

Figure 10



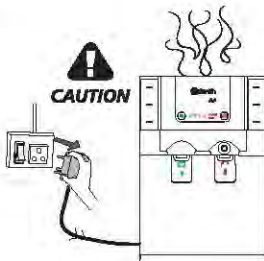
Connect the product to the power supply only with the plug that is provided with the purifier. (Figure 11)

Figure 11



Do not use the purifier if the power cord is damaged or you notice strange noise, burning smell, or smoke. Switch off the power, unplug the power cord immediately and call A. O. Smith authorized distributor. (Figure 12)

Figure 12



Do not open the purifier for cleaning the filters or for any part replacements. This must be done only by A. O. Smith authorized distributor. (Figure 13)

Figure 13





## When it is used

Do not put heavy objects on the product. (Figure 14)

Figure 14



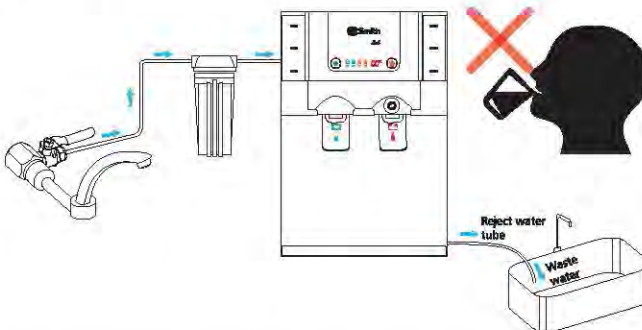
Do not put foreign objects or hand inside the purifier. (Caution is needed, especially for children). (Figure 15)

Figure 15



Do not drink the water from the reject water tube. Reject water should not be consumed in any form. (Figure 16)

Figure 16

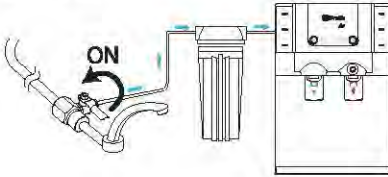


**Note:** It is recommended not to switch off the water purifier and/or turn off the water supply to the product when it is not been used for more than 24 hrs. The purifier has an inbuilt cleaning mechanism which cleans the RO membrane every 24 hrs by flushing it. This feature protects the RO membrane and ensures longer life.

## How to use

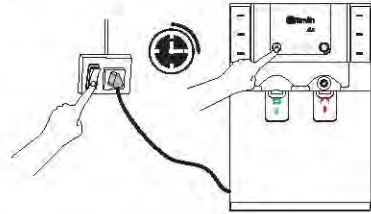
1. Turn ON the water connection through the ball valve. (Figure 17)

Figure 17



2. Switch ON the power supply and press the power button of the purifier. (Figure 18)

Figure 18



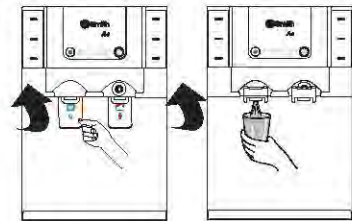
## To dispense normal water

1. To dispense normal water from the storage tank, push and hold the normal water faucet lever. (Figure 19)
2. To dispense normal water continuously, lift up the normal water faucet lever for the continuous water flow. To stop the water flow, pull down the normal water faucet lever. (Figure 20)

Figure 19



Figure 20



## Setting to Warm/Hot water temperature.

This purifier is capable of dispensing at two temperature choices warm water (45°C) and hot water (80°C).

### Setting to warm water temperature (45°C)


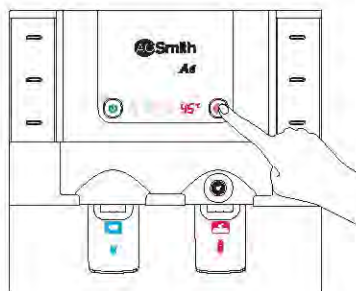
1. Press the water heating button  once. This will set temperature to 45°C which will be displayed on LED.
2. When water heating button glows, it indicates heating has started. The LED display shows the current water temperature.
3. Once the temperature reaches 45°C, the heating stops.

Figure 23



### Setting to hot water temperature (80°C)


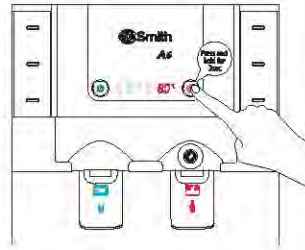
1. Press and hold the water heating button  for 3 seconds. This will set temperature to 80°C which will be displayed on LED.
2. When water heating button glows, it indicates heating has started. The LED display shows the current water temperature.
3. Once the temperature reaches 80°C, the heating stops.

Figure 24



### To dispense hot water




1. Press the child lock button  once, to unlock the hot water faucet. While pressing the child lock button , push and hold the hot water faucet lever to dispense the hot water. (Figure 25)
2. To dispense water continuously, lift up the hot water faucet lever first, then press the child lock button  to dispense hot water. To stop the water flow, pull down the hot water faucet lever. (Figure 26)

Figure 25

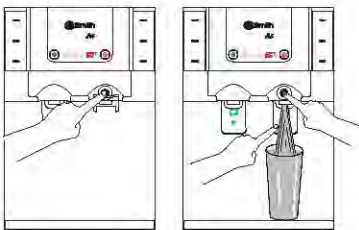
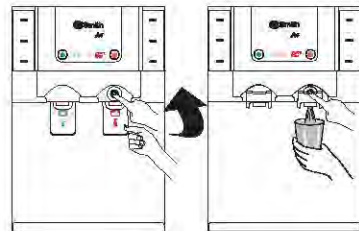


Figure 26



### **! DANGER**



**Scalding**

Hot water is dangerous, especially for children, aged or the disabled. The water purifier allows you to control the temperature of your hot water. Water Temperatures over 52°C can cause severe burns due to scalding.

### **NOTICE**

- Discard the first cycle of pure water, before you start using it for consumption.
- Make sure to discard the water from the storage tank if you have not used the purifier for more than 2 days.

---

## **How to drain water from storage tank**

To drain water completely from the purifier, use only the hot water faucet. Drain till you have drained two tankfull of water.

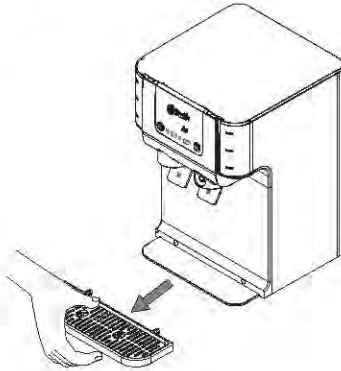
---

## Draining Drip Tray

We have provided removable Drip Tray with the product. In case there is spillage of water, it gets collected in Drip Tray.

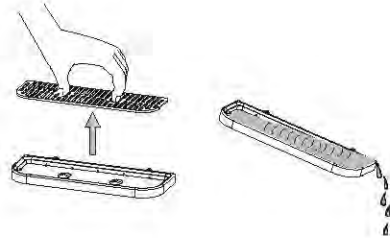
1. Remove the Drip Tray assembly by pulling forward. (Figure 27)

Figure 27



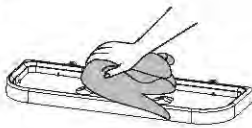
2. Remove Drip Tray cover by pulling upward and then drain completely. (Figure 28)

Figure 28



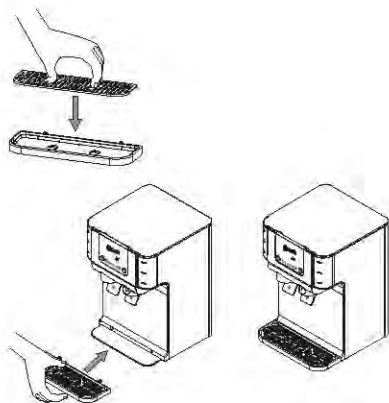
3. Clean the surface of water tray with a soft cloth. (Figure 29)

Figure 29



4. Re-attach the Drip Tray assembly into the purifier. (Figure 30)

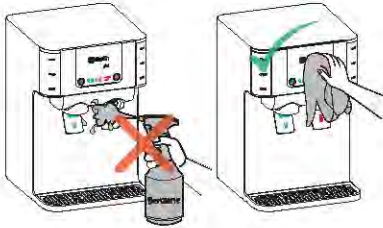
Figure 30



## How to maintain your product

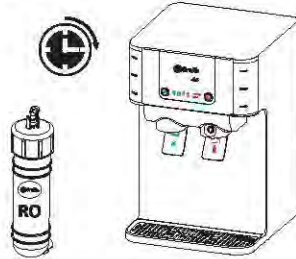
Do not splash water directly or clean with benzene, pesticides, thinner, alcohol, etc., but use a soft, dry cloth to clean the purifier. (Figure 31)

Figure 31



Replace filters regularly according to the replacement indications. This must be done only by A. O. Smith authorized distributor. (Figure 32)

Figure 32



Use A. O. Smith genuine accessories only, for optimal performance of the purifier. (Figure 33)

Figure 33





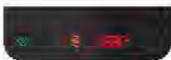





## Troubleshooting

Your A. O. Smith **A6** water purifier may not function at its desired capability if used incorrectly. This may not necessarily mean that the product is faulty. For instances like these, please follow the steps given below to troubleshoot the problem without the help from a certified technician. If the problem still persists, please call A. O. Smith authorized distributor immediately.






Problems	Check-up	Solution
Change in water taste.	Has the safe drinking water been stored in the tank for long time?	Drain the stored water the storage tank through from faucet.
	Filters / Membrane may require replacement.	Call A. O. Smith authorized distributor for replacement.
	Has the raw water quality changed?	Call A. O. Smith authorized distributor
	Check if there is no water flow through reject line.	Switch OFF the water purifier and call A. O. Smith authorized distributor
Decreased flow of purified water.	Check whether the tap / ball valve is closed.	Open the tap / ball valve.
	Filters / Membrane may be clogged or damaged.	Call A. O. Smith authorized distributor for filters replacement.
Less / No reject water.	Check if the reject water tube is bent.	Clear the bent in the reject water tube.
	Check if the reject water tube is blocked.	Switch OFF the water purifier and call A. O. Smith authorized distributor.
No pure water.	Check whether there is water supply in the tap.	If not, take the help of a plumber to set it right.
	Check whether tap / ball valve is closed.	Open the tap / ball valve.
	Check if either RO change or SCPA change is RED.	Call A. O. Smith authorized distributor for replacement of filters.
	None of the above.	Call A. O. Smith authorized distributor
No hot water.	Check whether the storage tank is full.	Wait until the storage tank gets filled.
	Fault in check valve.	Call A. O. Smith authorized distributor



<p>Buzzer beeps and power LED blinks continuously.</p> 	<p>Water leak alarm is triggered indicating that there is a leakage inside the purifier.</p>	<p>Switch OFF the water purifier and call A. O. Smith authorized distributor.</p>
<p>Buzzer beeps and tank full LED blinks continuously.</p> 	<p>Overflow alarm is triggered indicating overflow.</p>	<p>Switch OFF the water purifier and call A. O. Smith authorized distributor.</p>
<p>Buzzer beeps for 8 times and power LED blinks continuously.</p> 	<p>Low pressure alarm is triggered indicating that the system input water pressure is not in the required range.</p>	<p>Check feed water supply to the purifier. If problem still persists, switch OFF the water purifier and call A. O. Smith authorized distributor.</p>
<p>Buzzer beeps and auto flush LED blinks continuously.</p> 	<p>Auto flush alarm is triggered indicating level sensor error.</p>	<p>Switch OFF the water purifier and call Customer A. O. Smith authorized distributor.</p>
<p>RO change LED glows.</p> 	<p>RO change indicator glows when 10% life is remaining indicating that it is time to replace filters.</p>	<p>Call A. O. Smith authorized distributor for filters replacement.</p>
<p>Buzzer beeps for 10 times RO change LED blinks continuously.</p> 	<p>RO change alarm is triggered indicating that the filters need to be replaced and the water supply had been stopped.</p>	<p>Switch OFF the water purifier and call A. O. Smith authorized distributor for filters replacement.</p>

<p>SCPA change LED glows.</p> 	<p>SCPA change indicator glows when 10% life is remaining indicating that it is time to replace filters.</p>	<p>Call A. O. Smith authorized distributor for filters replacement.</p>
<p>Buzzer beeps for 10 times and SCPA change LED blinks continuously.</p> 	<p>SCPA change alarm is triggered indicating that the filters need to be replaced and the water supply has been stopped.</p>	<p>Switch OFF the water purifier and call A. O. Smith authorized distributor for filters replacement.</p>

## Error Messages and Actions

Error Code/Error Description	Unit Response	Solution
E1 (Element connection fault) 	Buzzer beeps for 10 seconds and hot water supply has been stopped.	Call A. O. Smith authorized distributor.
E2 (High Temperature Alarm) 	Buzzer beeps for 10 seconds and hot water supply has been stopped.	Call A. O. Smith authorized distributor.
E3 (NTC Sensor Alarm) 	Buzzer beeps for 10 seconds and hot water supply has been stopped.	Call A. O. Smith authorized distributor.
E4 (EEPROM error) 	Internal PCB error.	Call A. O. Smith authorized distributor.
E5 (Water level sensor error) 	Buzzer beeps for 10 seconds, auto flush LED blinks continuously and the purifier stop working.	Switch OFF the water purifier and call A. O. Smith authorized distributor.

## Technical Specifications

Model	A. O. Smith A6 Water Purifier
Product Dimensions (H x D x W)	482 mm x 369 mm x 326 mm
Net weight	10.8 kgs (approx.)
Gross weight	15.2 kgs (approx.)
Flow rate*	Up to 15 litres per hour
Storage tank capacity	9.2 litres (approx.)
Storage tank capacity (Hot tank)	0.8 litres (approx.)
Purification technology	RO (Reverse Osmosis) + Silver Charged Membrane Technology
7- Stage Purifying Technology	Pre-filter + Sediment filter + Pre Carbon filter + Side Stream RO membrane + MIN-TECH + Silver Activated Post Carbon and SCMT filter
Membrane type	Thin film composite RO membrane
Material of construction for plastic parts	Food safe, non-toxic, engineering grade plastics
Pump type	Diaphragm pump, 24VDC, 0.26 Amps, Operating Pressure 125 psi (Max.)
Input voltage range	150 – 300 VAC, 50 Hz
Power rating (Max.)	60 Watts
Pressure Rating***	7 psi to 30 psi
% Recovery**	Up to 30%
TDS reduction**	≥95% (approx.)
Heating element wattage	500 Watts @ 230 VAC
Warm water temperature	45°C ± 5°C
Hot water temperature	80°C ± 5°C
Emergency cutout temperature	90°C ± 3 °C
Input water temperature	5°C to 45°C

\* Flow rate depends on variable factors such as feed water pressure, feed water characteristics and condition of the membranes and filters.

\*\* Recovery and TDS reduction percentages also depend on variable factors such as life and condition of the membranes and filters, feed water pressure, feed water characteristics.

\*\*\* If input pressure exceeds 30 psi, a pressure reducing valve needs to be installed at the feed line. If the pressure is lower than 7 psi, a booster pump needs to be installed. Ensure you buy them from A. O. Smith authorised distributor.

**Recommended input Feed water quality for the optimum performance of your product**

<b>RECOMMENDED FEED WATER QUALITY</b>	
<b>Parameter</b>	<b>Limits</b>
Total Dissolved Solids (TDS)	Up to 2000 ppm
Total hardness	Up to 500 ppm
Turbidity	Up to 5 NTU
Iron	0.3 ppm (max.)
Feed water pressure	7 psi to 30 psi
Feed water temperature	5°C to 45°C

## FAQs

- 1. What is A. O. Smith A6 water purifier?**  
A. O. Smith A6 is an advanced 7-stage RO from A. O. Smith. It is 100% RO with no bypass of water for maximum purity. It is double purified by SCMT (Silver Charged Membrane Technology) and required essential minerals are added back to water. It has options to draw normal, warm and hot water.
- 2. Does it have provision of hot water?**  
Yes, you can draw hot water from A. O. Smith A6 water purifier.
- 3. What is the temperature for hot water?**  
It has 2 temperature choices. With the first press the water will heat up to 45°C and upon pressing for 3 seconds the water will heat up to 80°C.
- 4. Is warm / hot water readily available?**  
It is very convenient to get warm / hot water from your A. O. Smith A6 water purifier. For warm water at 45°C press the water heating button once and within 2 minutes (approx.) you will get warm water. For hot water at 80°C press and hold the water heating button for 3 seconds and in about 5 minutes (approx.) you can draw hot water.
- 5. What is night assist?**  
India's first RO water purifier with night assist technology along with light at the point of water dispensing. It is designed for the ease of taking a glass of water in the middle of night. It also keeps your kitchen beautifully illuminated.
- 6. What is child lock protection?**  
India's first RO with child lock feature inbuilt to meet the international standards of safety for you and your loved ones. It is designed to ensure protection from hot water spillage when you don't intend to take.
- 7. Does it give cold water?**  
No, it gives water at normal temperature and at 2 hot water temperature choices.
- 8. What is 100% RO with mineraliser?**  
In ordinary RO+UV water purifiers, some amount of water is made to bypass the RO membrane. With this, heavy metals, unwanted salts and pesticides also pass through. In A. O. Smith A6 water purifier 100% of the water is passed through the RO membrane which ensures maximum purity of water and required minerals are added back to pure water.
- 9. How many stages does A. O. Smith A6 has? What are the stages?**  
A. O. Smith A6 has 7 stages of purification which are Pre-filter + Sediment filter + Pre Carbon filter + RO Membrane + MIN-TECH (Mineraliser Technology) + Silver Activated Post Carbon + SCMT (Silver Charged Membrane Technology).
- 10. How is A. O. Smith A6 different from A. O. Smith S4 Water Purifier?**  
A. O. Smith S4 is 5 stage 100% RO whereas A. O. Smith A6 is a 7 stage RO with double purity and added minerals. It also has advanced hot water dispensing at 2 temperature choices.

- 11. What is SCMT?**  
Silver Charged Membrane Technology is double purification of water after the RO membrane to ensure absolute safe drinking water.
- 12. What is RO+SCMT?**  
It is unique double purification process to ensure absolute safe drinking water.
- 13. Does it retain minerals?**  
Yes, A. O. Smith **A6** water purifier has an additional mineral filter (MIN-TECH) which adds essential minerals back to water.
- 14. What is MIN-TECH?**  
MIN-TECH is Mineraliser Technology to add essential minerals back to water.
- 15. What is the storage capacity of A. O. Smith **A6** water purifier?**  
It has total capacity of 10 litres, 9.2 litres for ambient temperature water and 800 ml for hot water.
- 16. What is the purification flow rate of A. O. Smith **A6** water purifier?**  
Up to 15 litres per hour, purification capacity also depends on water quality, condition of filters and RO membrane.
- 17. Does it have Pre-filter? Is it free?**  
Yes, A. O. Smith **A6** water purifier comes with a Pre-filter which is part of the product.
- 18. What all alerts do A. O. Smith **A6** water purifier has?**  
A. O. Smith **A6** water purifier has alerts to change the SCPA (Sediment and Pre Carbon) and RO membrane, Silver Activated Post Carbon along with SCMT (Silver Charged Membrane Technology) and MIN-TECH (Mineraliser).
- 19. When does the A. O. Smith **A6** water purifier indicate a filter change?**  
The first notification is indicated when the consumption of the filter life is at 90%. When the filter life consumption is at 100%, the water purifier automatically stops functioning.
- 20. What is the nature of indication for the change in filter?**  
On the first intimation when the filter life is at 90% the respective filter indicator will start to blink. On 100% filter life consumption, the blinking will be replaced with a constant light in the respective indicator.
- 21. In the A. O. Smith **A6** water purifier, what is the life of the RO membrane?**  
The life of RO membrane in the A. O. Smith **A6** water purifier is 800 hrs or 12,000 litres of pure water. It generally would last for 2 years assuming a per day consumption of 15 litres, under the input water norms.

**22. What is the digital display in A. O. Smith A6 water purifier?**

Digital display in A. O. Smith A6 water purifier indicates

- 1) Tank full
- 2) Flushing of RO membrane
- 3) Change of SCPA (Sediment and Pre Carbon)
- 4) Change of RO membrane, Silver Activated Post Carbon, MIN-TECH and SCMT
- 5) Temperature indicator and error indicator.

**23. Can A. O. Smith A6 water purifier be mounted on the wall and can it be table top?**

Yes, A. O. Smith A6 water purifier can be mounted on the wall or can be placed on the counter.

**24. Does it have colour options?**

No, A. O. Smith A6 water purifier comes in one standard colour.

---

## Recommended uses of waste water

Although the rejected water has high concentration of TDS (Total Dissolved Solids) and hardness. If required it can be used for the following:

1. It can be used for watering the garden and plants.
2. It can be used for mopping and cleaning the floors.

**Note:** Please consult A. O. Smith authorized distributor before using this water.

---



86 Mayon cor. M. Cuenco., Sta Mesa Heights Quezon City  
Tel: 740-66-75